

Monthly summary of Back of Boat Lobster Sales (BoBS)

Department of Primary Industries and Regional Development

September - 2023.

Main summary

This report contains information relating to the landing of western rock lobsters by licensed commercial fishers in the West Coast Rock Lobster Fishery, under the 'Back of Boat Sales' (BoBS) mechanism, which was introduced into the legislation on 12 September 2020. A maximum limit of 100 lobsters per landing was initially applied to the mechanism. To match demand and allow for an expansion in the program the limits changed at the end of November 2021 to allow for 200 lobsters for every month, except for December where they can land 400 lobsters. This limit was further increased to 999 lobster from 1 July 2023.

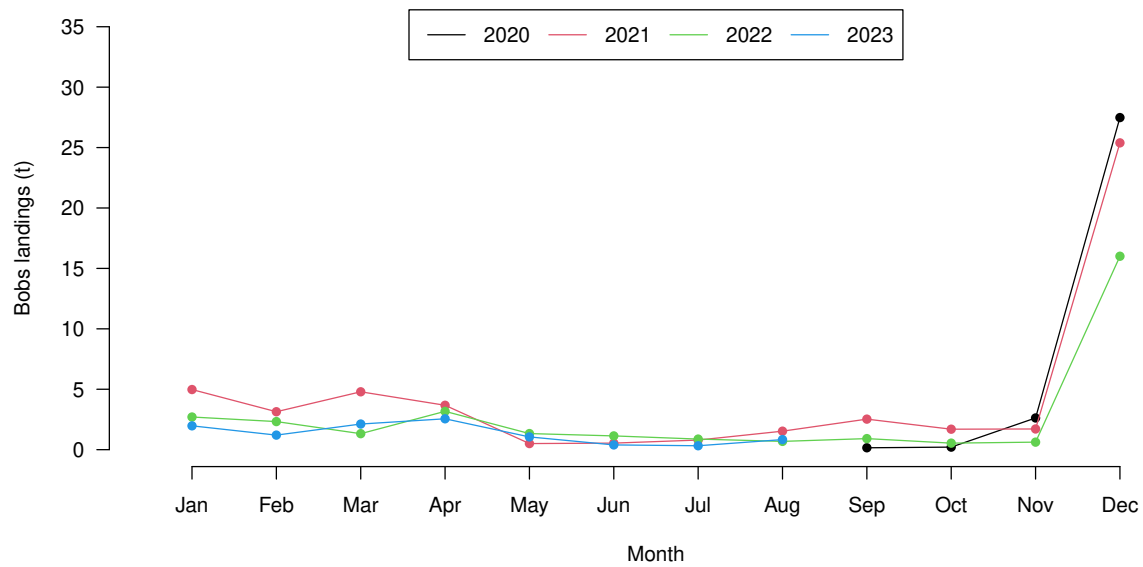
Disclaimer: This report contains data to the end of August 2023. Please note that the data used has not been formally validated and reporting errors may be present. As a result, this data should be considered as preliminary, and subject to change.

- Since the program began, a total of 102 different vessels have landed BoBS lobsters at 21 landing areas.
- To date a total of 123,846.7 kg of lobsters have been landed for BoBS.
- This weight of lobsters was comprised of 210,776 individuals at an average weight of 587.57 gm.
- Currently 0.61% of the commercial catch landed since its inception has been BoBS lobsters.

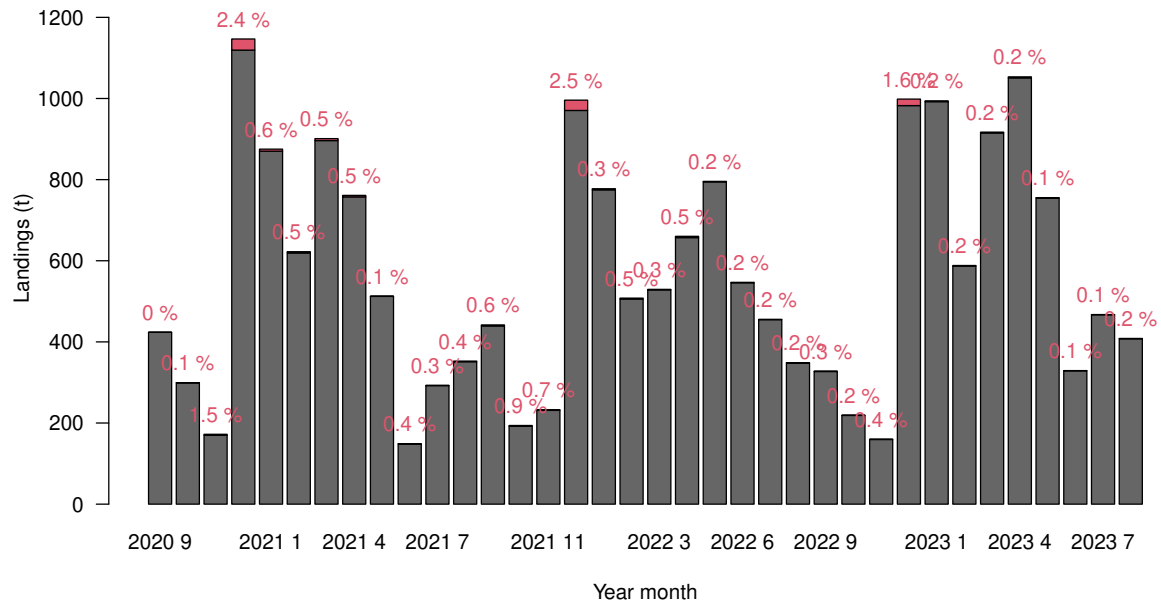
Year	Month	Weight.kg	Num_Lob	Num_Fisher	Av.Lob.Weight
2020	9	156.5	314	7	0.498
2020	10	211.1	403	7	0.524
2020	11	2623.5	3864	22	0.679
2020	12	27482.1	45496	61	0.604
2021	1	4976.1	8123	40	0.613
2021	2	3140	4953	28	0.634
2021	3	4789.9	8352	42	0.574
2021	4	3673.5	6243	32	0.588
2021	5	504.3	942	21	0.535
2021	6	541.6	1096	6	0.494
2021	7	794.5	1406	10	0.565
2021	8	1530.5	2774	16	0.552
2021	9	2528	4704	29	0.537
2021	10	1694.1	2879	31	0.588
2021	11	1712	2898	25	0.591
2021	12	25389.6	44228	43	0.574
2022	1	2701.9	4292	26	0.63
2022	2	2324.5	3777	24	0.615
2022	3	1323.8	2194	20	0.603
2022	4	3170.8	5122	28	0.619
2022	5	1333.1	2099	18	0.635
2022	6	1138.4	1723	14	0.661

Year	Month	Weight.kg	Num_Lob	Num_Fisher	Av.Lob.Weight
2022	7	875.8	1459	12	0.6
2022	8	685.1	1220	15	0.562
2022	9	915.1	1752	14	0.522
2022	10	540.1	930	16	0.581
2022	11	622.6	871	13	0.715
2022	12	16006.8	28815	35	0.556
2023	1	1972.2	3068	25	0.643
2023	2	1205.2	1917	23	0.629
2023	3	2122	3828	29	0.554
2023	4	2555.1	4355	40	0.587
2023	5	1055.8	1815	24	0.582
2023	6	392.4	721	11	0.544
2023	7	324.7	652	11	0.498
2023	8	834	1491	15	0.559

BoBS landings by year and month

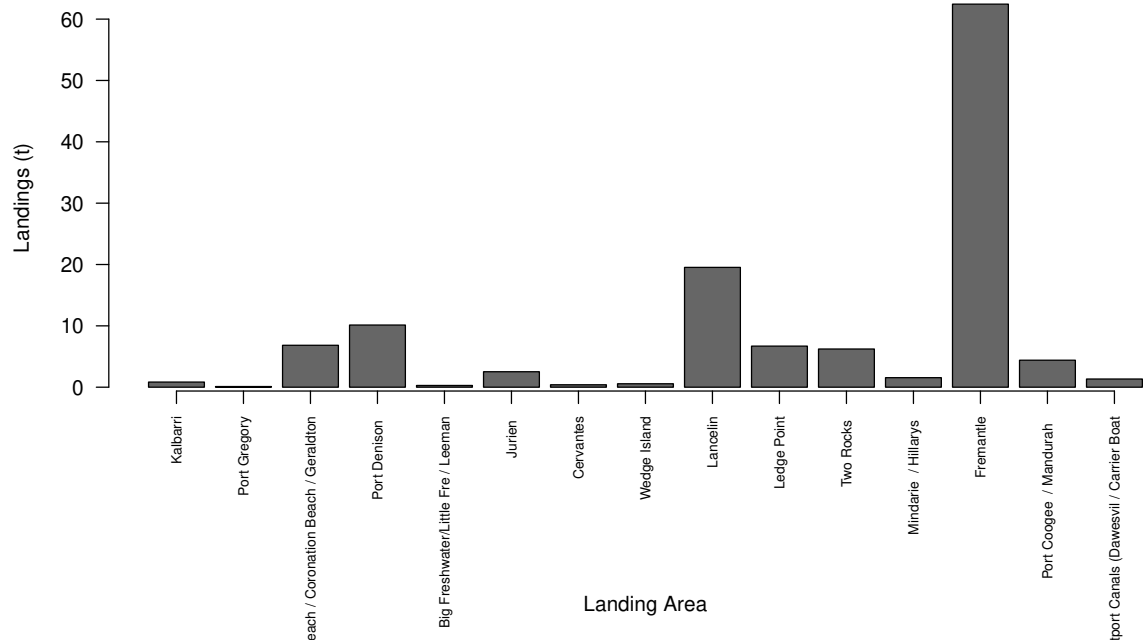


Proportion of Catch landed as BoBs



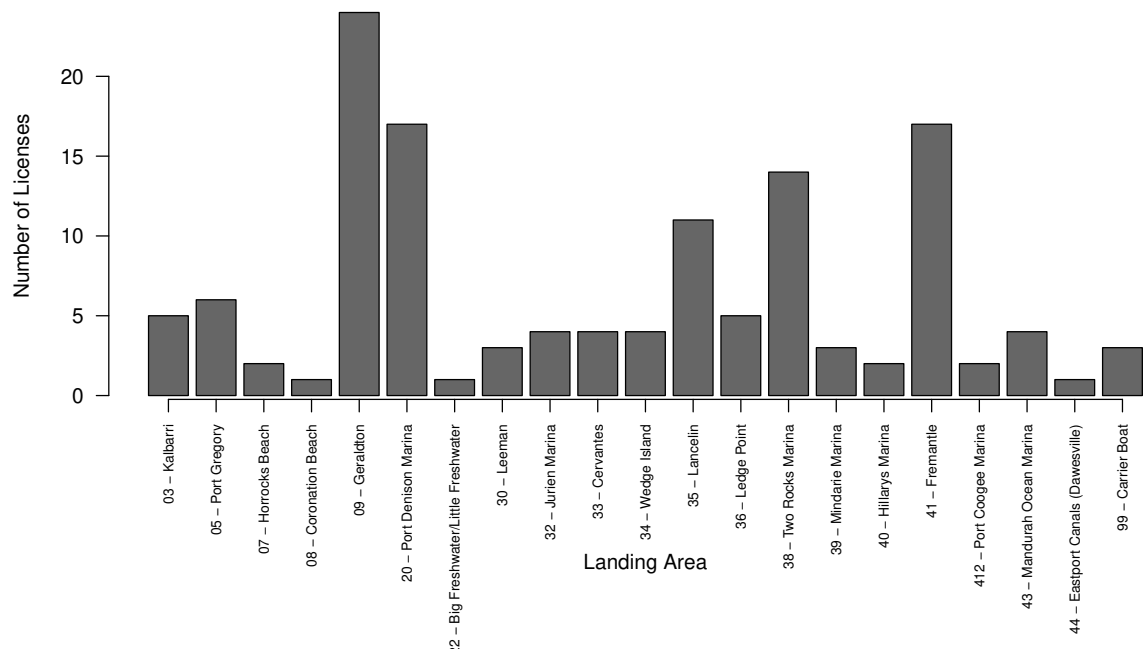
Registered receiver (grey) and BoBS (red) commercial catches by month. Numbers (red) indicate the percentage of catch for that month which was landed as BoBS lobsters.

Total BoBS Catch landed by Area (all months combined)

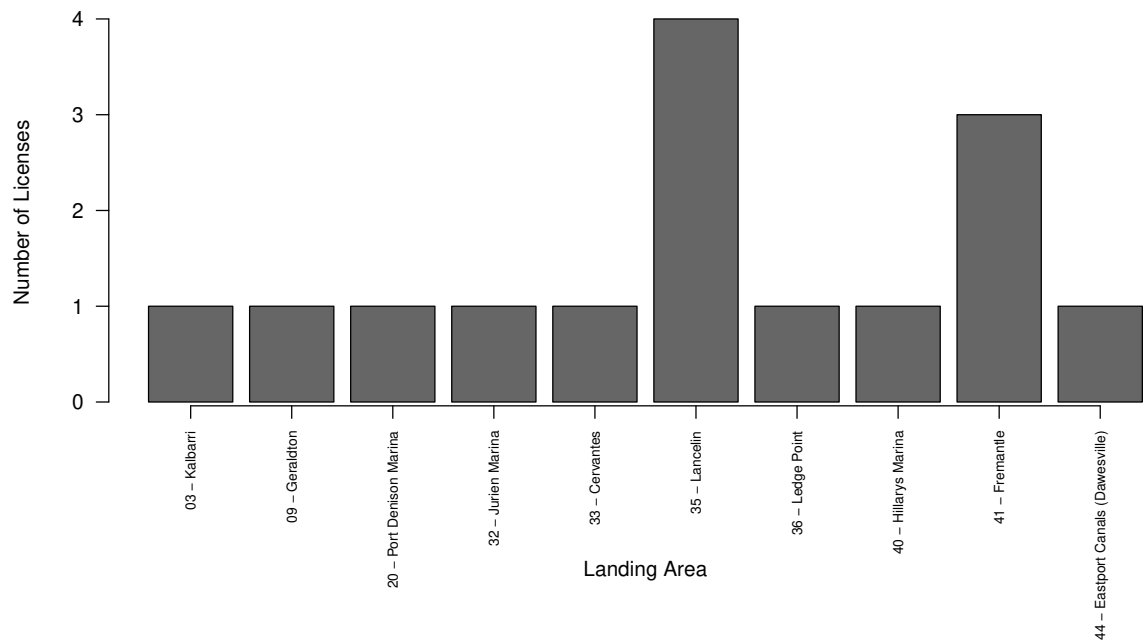


Note when the number of fishers landing catch is < 4 in a Landing Area their statistics have been combined with an adjacent area for confidentiality reasons.

Number of Vessels landing BoBS lobsters by Area



Number of Vessels landing BoBS lobsters by Area during August 2023



Number of licenses (vessels) landing BoBS by month and year.

