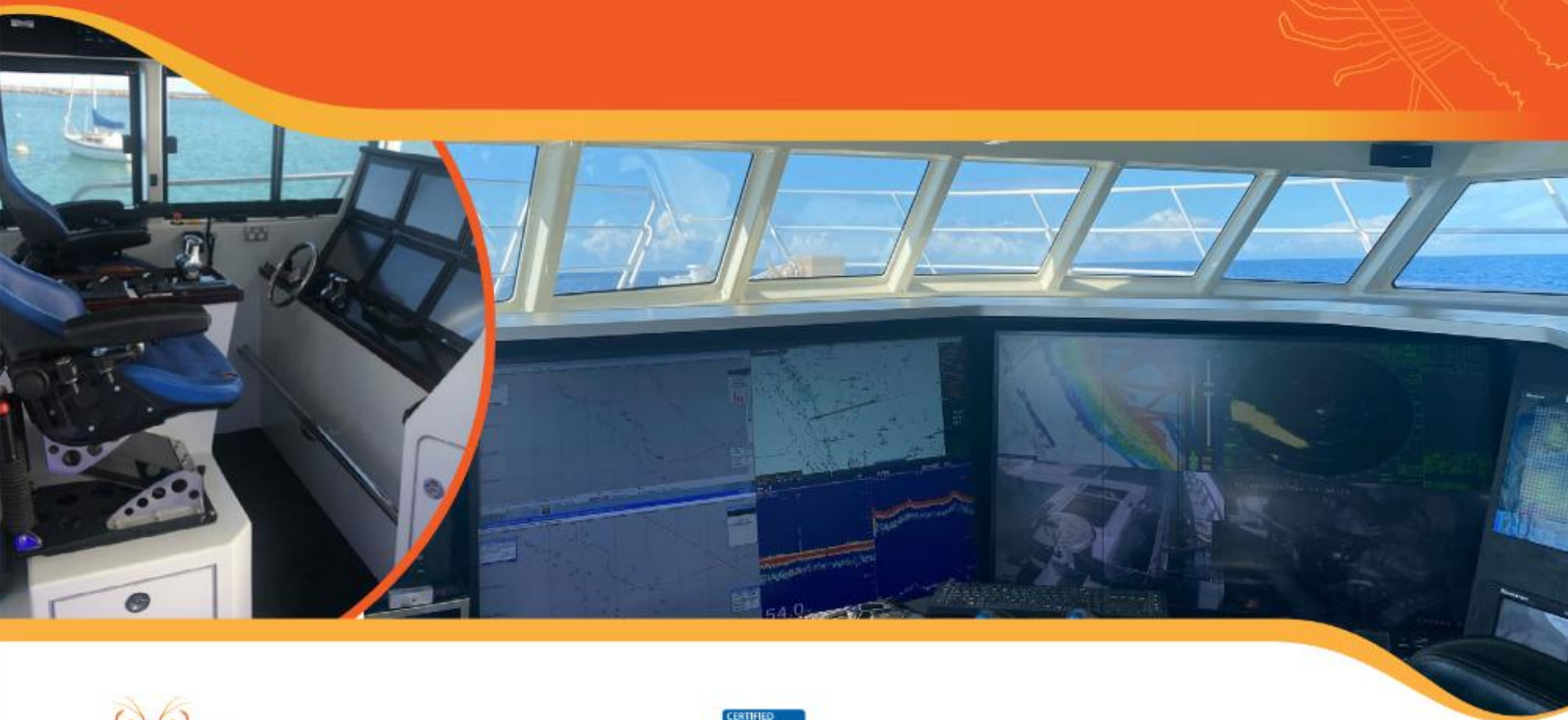


Western Rock Lobster

FishOps App Project (P3) Training

Lapis 



Diversus



Contents

- Agenda
- Welcome
- Industry Digital Strategy, Background and Progress
- Purpose & Objectives
- FishOps App: Overview
- Training
- What we need from you
- Outcomes
- Questions



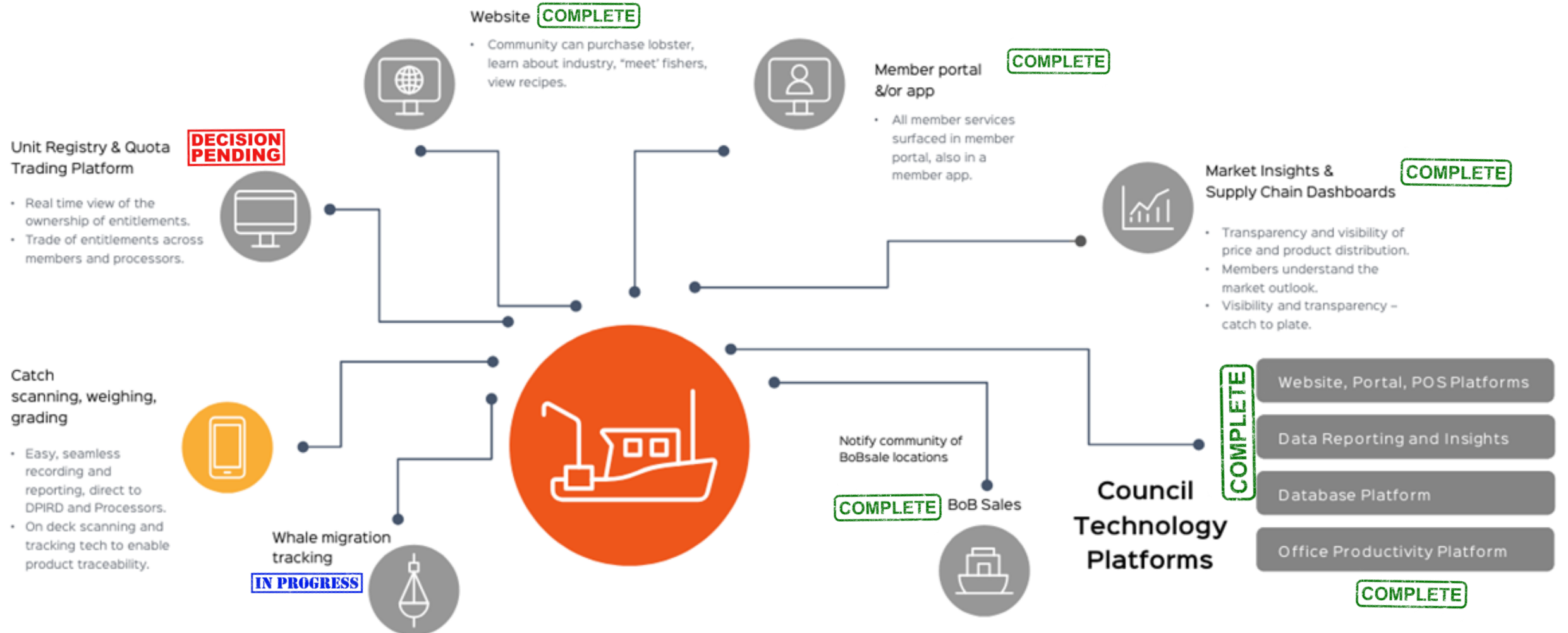
Agenda



Agenda Item	Duration	Resp. Person
Welcome and Background	5 Mins	David
Meet the Team	10 Mins	David
Purpose and Objectives	3 Mins	Dharmita
UAT Process, Script Step-Through	10 Mins	Dharmita
Bug/ Issue Identification	12 Mins	Dharmita
UAT Schedule	15 Mins	Dharmita
What we need from you	10 Mins	Ashley / Dharmita
Outcomes	10 Mins	All
Close		Ashley



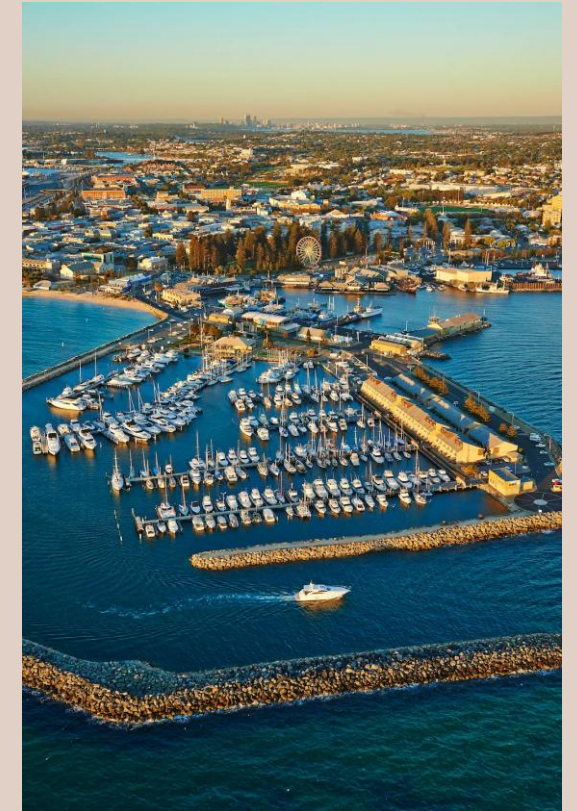
Industry Digital Strategy Background and Progress



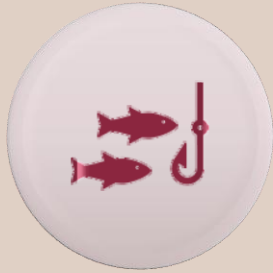
Meet the Team

- **Project Team Members:**

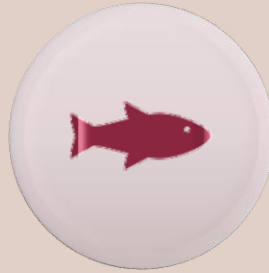
- David Pietersen – WRL: Program Manager
- Cameron Allen – WRL: Marketing and Communications Manager
- Ashley Ball – Diversus: Principal Consultant/ Assurance
- Marc Gianatti – Diversus: Solution Architect/ Project Manager
- Dharmita Ramluckun – Diversus: Project Manager/ Business Analyst
- Vikas Singh – Diversus: Solution Architect/ Technical Lead
- Mya Ubalde – Diversus: Developer
- Edmond Wee – Diversus: Senior Test Analyst
- John Heskins – Lapis IT/ Veris: Supplier/ Application Vendor CEO
- Ti Zhou – LapisIT/ Veris: Solution Architect
- Junyou Lin – LapisIT/ Veris: Developer



Revisit the Business Problem



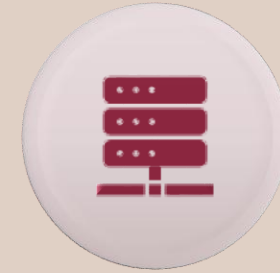
Inefficiencies in the economics of fishing lead to decreased profitability and operational effectiveness



Crucial industry knowledge transfer is inadequate to future generations which poses a risk to the sustainability of fishing practices in WA



Significant environment and operational threats affect the industry e.g. Wind farms, climate change



Multiple data entry points lead to operational inefficiencies for fishers

Business Drivers



**Enhance
Operational
Efficiency and
Profitability**



**Capture, Preserve
Essential Industry
knowledge**



**Streamline
Compliance and
Reporting
processes**



**Reduce Compliance
Burden to foster a
more inclusive
industry for junior
entrants**

Objectives



Integrate Data on Physical Conditions and Trip Costs with Catch Data to Optimize Fishing Operations



Leverage and Apply Insights across different habitats for broader ecological and economic benefit



Provide Real-Time Information to Make Informed Decisions on a day-to-day Basis for effective Trip planning

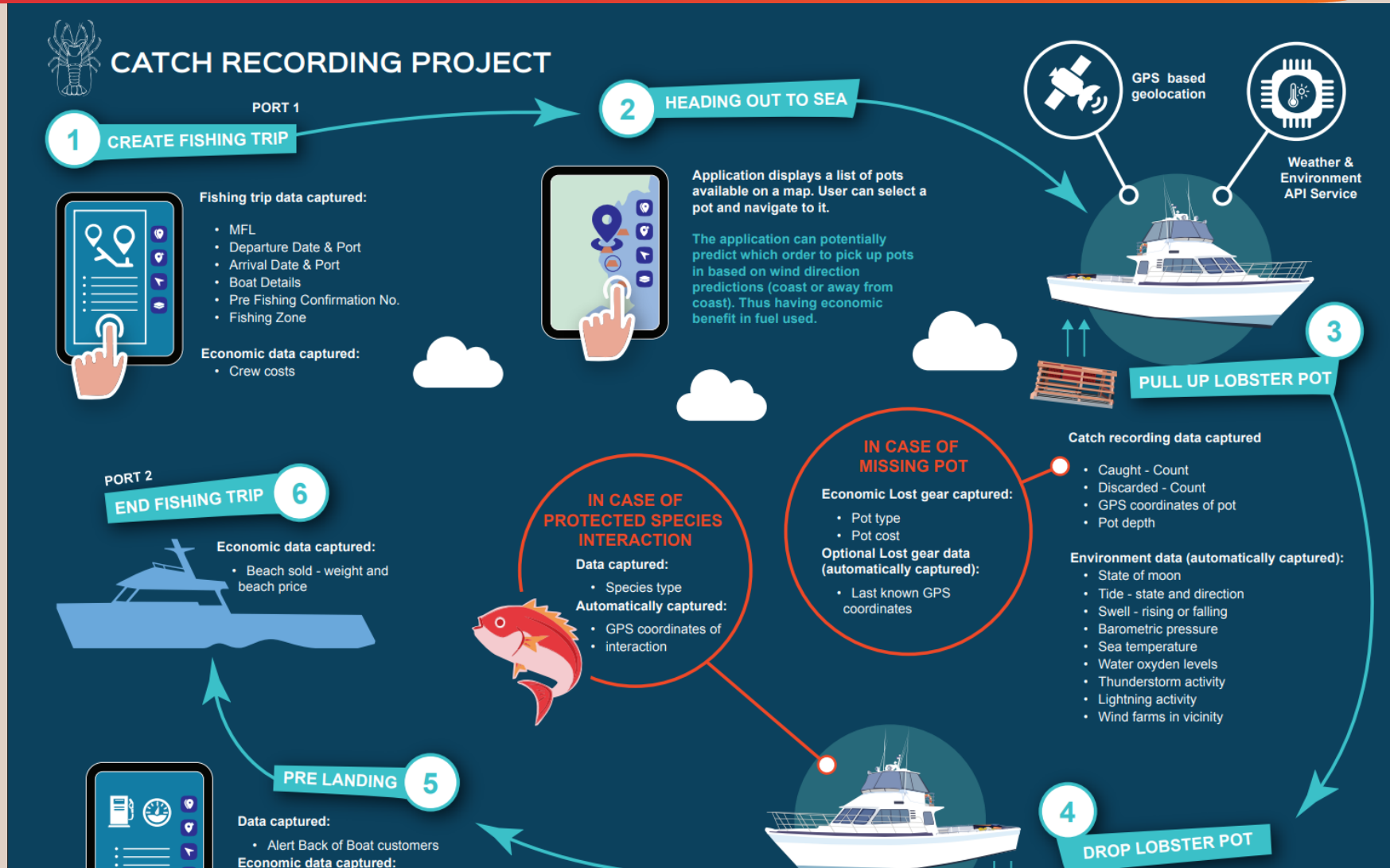


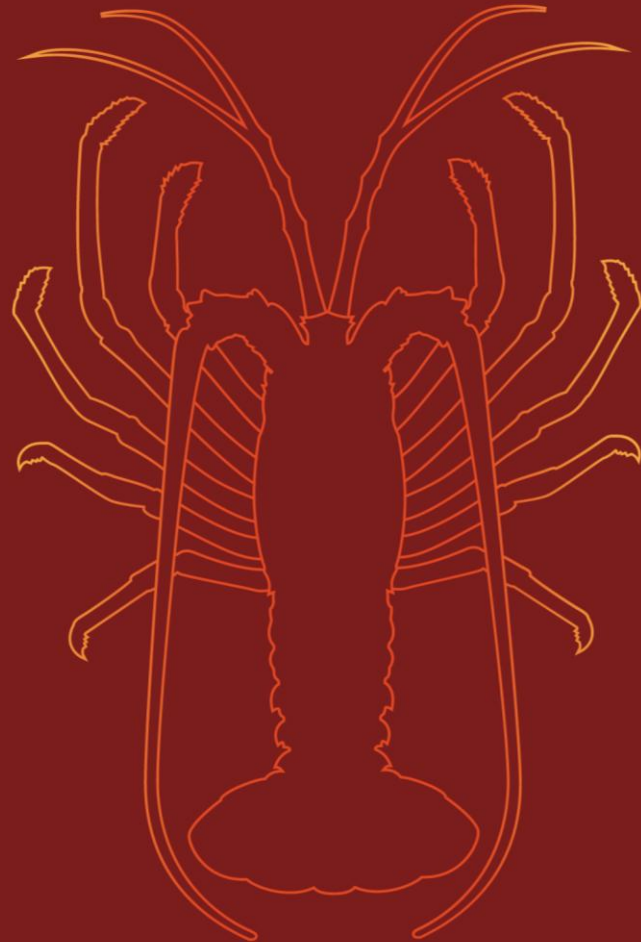
Centralize Information and present it in a trusted and accessible manner to Fishers, thereby enhancing transparency and reliability of data communications



Reduce data entry points for fishers

FishOps App: Overview





Western
ROCK
LOBSTER

FishOps

Login with a WRL portal account

The Lobster reporting app uses your existing WRL XXX portal login information, giving you instant access.

Login

[Login help \(Usernames & Passwords\)](#)

Western Rock Lobster Catch Recording App
Version 1.0.3
© 2025 WRL Inc.

Welcome to FishOps!



- You have received an email from the Member's Portal with:
 - MFL Owner Details who nominated you as a Master
 - Your FishOps Username
 - Your FishOps Password
- The Login Information must be used to log into FishOps for your Western Rock Lobster fishing business.
- Please keep your details safe and do not share them.

Housekeeping



- WE DO NOT SHARE ANY OF THE INFORMATION WITH OTHER FISHERS
- This is not a Compliance App – there are very few mandatory fields
- We will provide simple, easy-to-use reporting on the App – **Gain Insights** on the HP
- We will provide detailed, more complex reporting in the Member's Portal
- You will be able to see only your fishing data – no one else's
- Let us know:
 - What you like – Great!
 - What you don't like – Meh...
 - Oops, What did we miss?

Device Compatibility

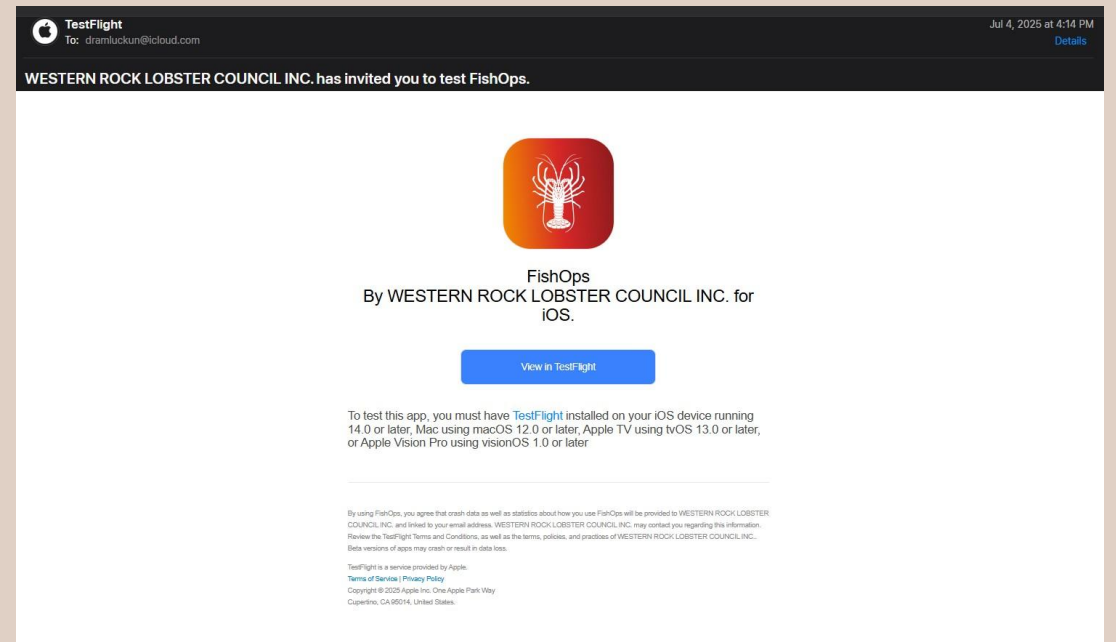


- Your Apple devices must have the Apple iPad iOS 16 or higher loaded
- The iPhone – as a backup only – must be an iPhone 8+ or later
- Your Android Devices must have the Android 14 version
- Your devices must be Wi-Fi and Cellular enabled
- If you're using Wi-Fi only, your location will not be saved when you drop your pots
- Hard to use the touchscreen? A Stylus Pen/ Apple Pen will help you tap through the screens effortlessly!

Invitation to Download FishOps



- You will find an invitation to download and install FishOps
- Please click on the link to download it from the App Store or Google Play Store



Download, Install and Login

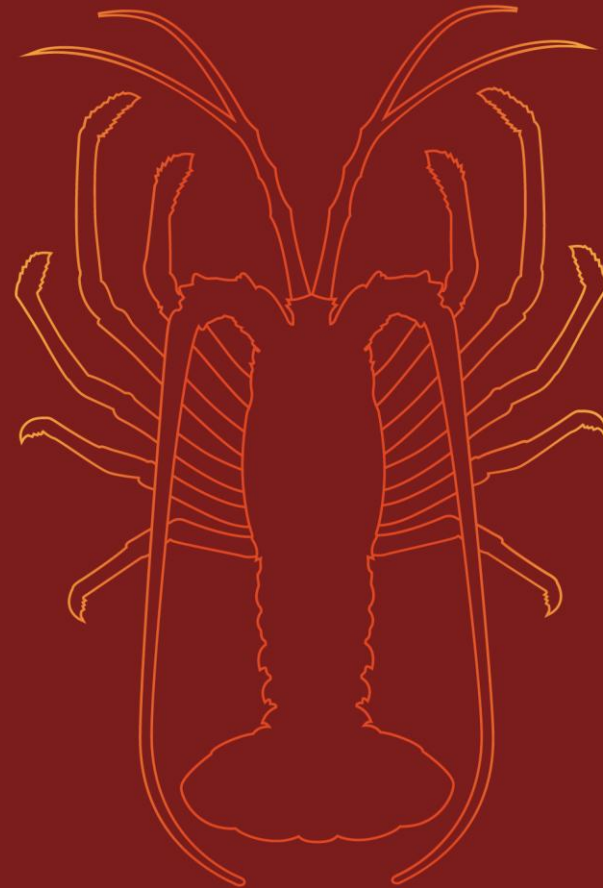


- Open the App Store on your Apple Device
- Search for FishOps:



- Click on the Icon to Install the App
- Enter your passcode if you need to confirm the action
- Wait for the “Open” button
- Click on “Open”
- Enter your email address and password
- Change your password
- Login and Accept the Terms and Condition of Use

Login Page



Western
**ROCK
LOBSTER**

FishOps

Login with a WRL portal account

The Lobster reporting app uses your existing WRL XXX portal login information, giving you instant access.

Login

[Login help \(Usernames & Passwords\)](#)

Western Rock Lobster Catch Recording App
Version 1.0.3
© 2025 WRL Inc.

Terms and Conditions of Use

The Terms and Conditions of Use contain important safeguards for users of FishOps.

Data Privacy, Protection of Personal Information and storage and security are covered.

WRL will anonymise any personal information, fishing locations and any other proprietary information related to your fishing area, locations and catch details.

Accepting these Terms Conditions protect you as a fisher as well as the Fishery.

TestFlight 10:33 AM Fri 25 Jul

94%

Terms and Conditions

You must read the full Terms and Conditions before continuing. Choosing to reject them will result in being logged out of the app.

WESTERN ROCK LOBSTER COUNCIL TERMS AND CONDITIONS FOR USE OF FISHOPS

PART A. Preamble

The Application (**FishOps**) has been established by the Western Rock Lobster Council Inc (ABN 25 938 811 829) (**we, our or us**).

We established FishOps to create an online platform to enable Western Australian fishers, Masters, MFL holders and their Authorised Representatives (**Fishers**) to record, monitor and receive reports (**Services**) directly in relation to their fishing activities as permitted under the *West Coast Rock Lobster Management Plan 2012*.

We are not a party to any transactions that are entered using reports generated for users by FishOps.

These terms and conditions (**Terms**) govern the relationship between us and any user of FishOps (**you**).


PART B. Binding Terms

Please read these Terms carefully and if you do not agree to all of the Terms, then you must not continue to use FishOps. By continuing to use FishOps, you represent and warrant to us that you have read and understood the Terms, and that you agree to be bound by the Terms.

We reserve the right to amend the Terms at any time and for any reason. If we make a change to the Terms, we may, but are not obligated to, notify you of the changes by:

- a. posting information on FishOps or our Website; or
- b. providing notice to you in accordance with Part C of these Terms (privacy policy).

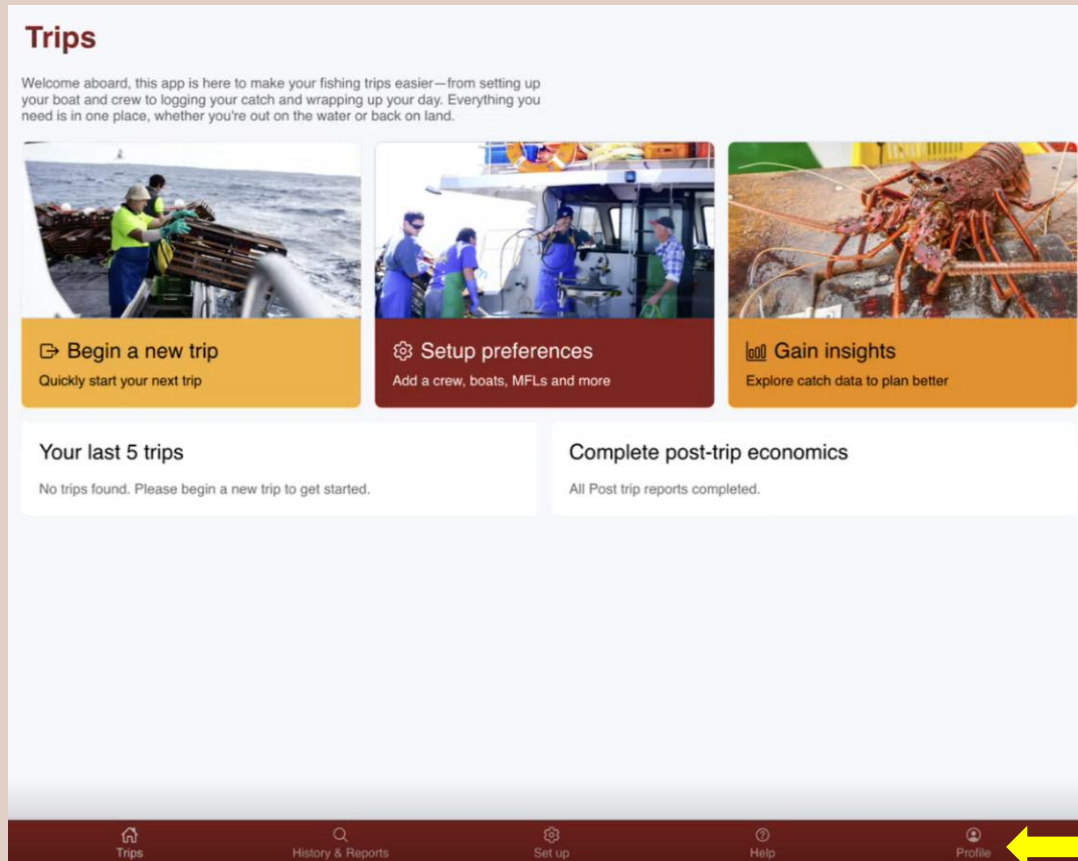
We may require that you provide us with confirmation that you have read and accepted any change to the Terms prior to accessing and using the Services following any such change.

Your ongoing use of FishOps constitutes an acceptance of any  changes to the Terms.

I Do Not Agree

I Agree

FishOps Home Page



- The Home Page is the first page you will see after logging in.
- You can:
 - Begin a Fishing Trip
 - Set up Preferences
 - View some reports when you have completed some fishing trips
 - Check and Update your Profile
 - Find Help

Let's check your Profile

Your Profile Page



Profile

Your profile as recorded in the WRL suite of systems.

Your details

Name	VikasTest6 Singh
CFL Number	JLC-FLUA-T
Email Address	2qni9yg9g@mozmail.com
Nickname	<input type="text" value="Enter your nickname"/>
Telephone*	<input type="text" value="0000000000"/>

Notification settings

Receive email on password reset	<input checked="" type="checkbox"/>
Receive email on MFL nomination	<input type="checkbox"/>
Receive email on MFL denomination	<input type="checkbox"/>

Trips History & Reports Set up Help Profile

- Click on the “**Profile**” menu item
- Your Details and Notification Settings will be shown
- You can review:
 - Full Name
 - CFL Number
 - Email Address
- You can add:
 - Nickname if any
 - Contact Phone number
- Set your Notification Preferences:
 - Shift buttons to the Right to switch on notifications that you want
 - Your Notification Preference will show as **Green** if on or **Grey** if not
- Click on “**Save**”
- You will be back at the Home Page

Setting up FishOps – Trip Details 1/2

- Click on “**Set Up**”
- Click on the “**Business**” option
- MFL Details:
 - Select your MFL from the list
 - Check:
 - MFL First Name
 - Last Name
 - MFL Number
 - Email Address
 - Contact Phone number
 - Mark with a Star as a favourite
- Capture Boat Details:
 - Click on the “**Add Boat**” button
 - Capture Boat Name
 - Capture the LFB Number
 - Mark with a Star as a favourite

Set up

Business App settings

★ Favorite options to quickly prefill during your trips

MFL

★ Vikas Delegate Test Singh
WCLL1037
zprbg0g8z@mozmail.com
null

Boats + ADD BOAT

★ My boat
12345

Crew + ADD CREW

★ Ti Zhou
CFL-1234-523

Receivers + ADD RECEIVER

Authorized Receivers

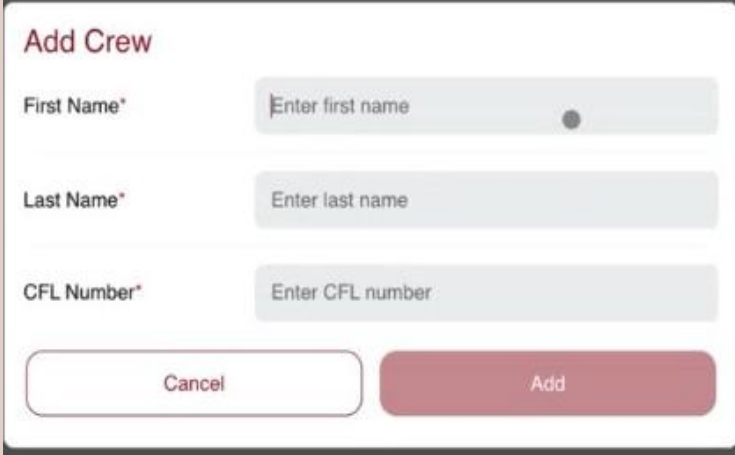
★ Abrolhos
TEST-RR-NUM-5

BlueMango Lobster

Trips History & Reports Set up Help Profile

Setting up FishOps – Trip Details 2/2

- **Capture Crew Details:**
 - Click on **“Add Crew”**:
 - Capture First and Last Name
 - Capture Nickname if any
 - Capture CFL Number
 - Click on **“Save”**
 - Repeat for All your preferred Crew Members
- **Review Registered Receivers Details:**
 - Mark your Receiver with a Star OR
 - Click on **“Add Registered Receiver”**
 - Select Registered Receiver from the List
 - Not in the List?
 - Capture Registered Receiver’s Name
 - Capture Registered Receiver License No
 - Click on **“Save”**

A screenshot of a web form titled "Add Crew". It contains three input fields: "First Name*" with placeholder text "Enter first name", "Last Name*" with placeholder text "Enter last name", and "CFL Number*" with placeholder text "Enter CFL number". At the bottom, there are two buttons: a white "Cancel" button and a red "Add" button.


Add Crew

First Name* Enter first name

Last Name* Enter last name

CFL Number* Enter CFL number

Cancel Add

A screenshot of a web form titled "Add Receiver". It contains two input fields: "Receiver Name*" with placeholder text "Enter receiver name" and "Receiver Licence*" with placeholder text "Enter receiver licence". At the bottom, there are two buttons: a white "Cancel" button and a red "Add" button.

Add Receiver

Receiver Name* Enter receiver name

Receiver Licence* Enter receiver licence

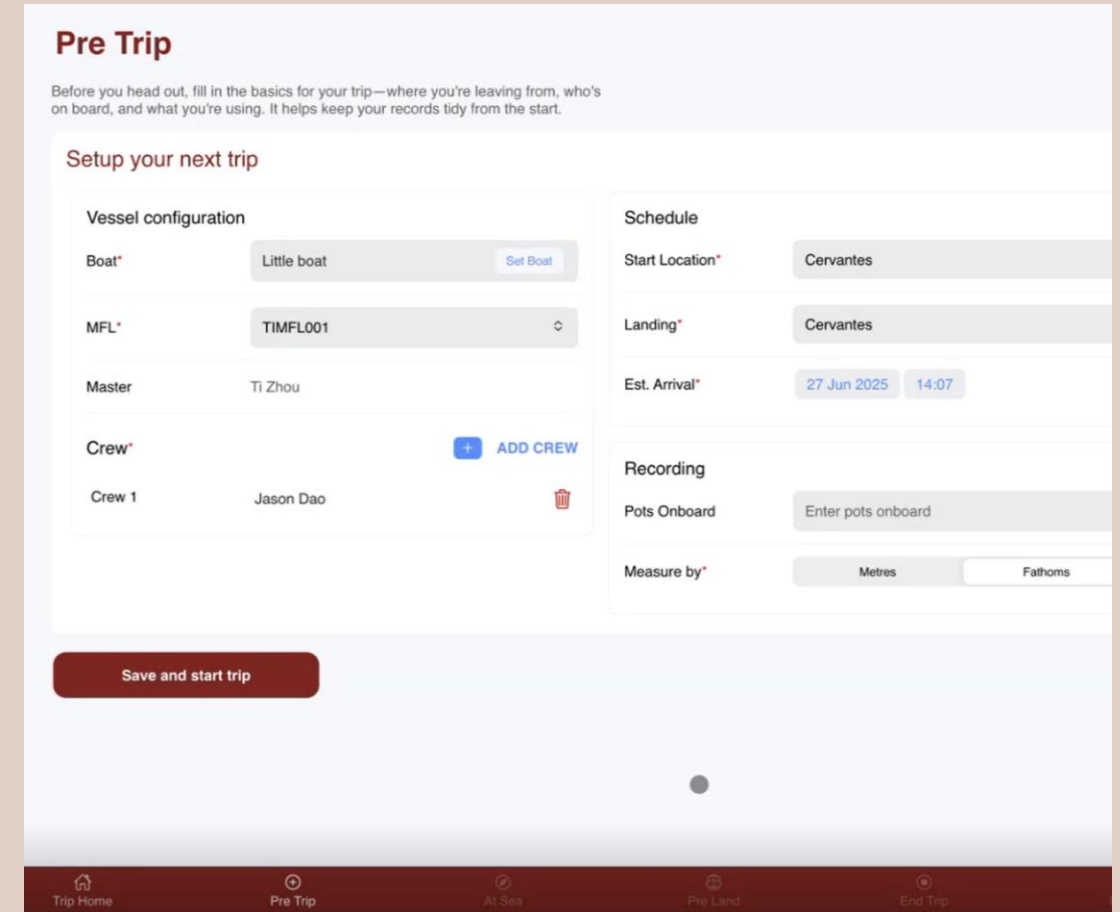
Cancel Add

All Set!

Pre-Trip

Set up your next trip

- Confirm “**Vessel configuration**”
 - Boat Details
 - MFL Details
 - Master (your) Details
 - Crew Details
 - Change?
 - Add a New Crew Member and/ or Remove 1 who is no longer with you
- Click on “**Schedule**”
 - Under Schedule, Select your Start Location (Approved Landing Area)
 - Select your Start Date and Time
 - Select your Landing Location
 - Select your Estimsted Arrival Date and Time
- Under “**Recording**”
 - Capture the **Number of Pots** you have onboard
 - Select your unit of Measure – **Fathoms or Metres**



The screenshot shows a mobile application interface for setting up a trip. At the top, there's a header 'Pre Trip' with a subtitle: 'Before you head out, fill in the basics for your trip—where you're leaving from, who's on board, and what you're using. It helps keep your records tidy from the start.' Below this, the screen is divided into two main sections: 'Vessel configuration' and 'Schedule'. The 'Vessel configuration' section includes fields for 'Boat*' (set to 'Little boat' with a 'Set Boat' button), 'MFL*' (set to 'TIMFL001'), 'Master' (set to 'Ti Zhou'), and 'Crew*' (with an 'ADD CREW' button). Below the crew section, there's a list of crew members, currently showing 'Crew 1' as 'Jason Dao' with a delete icon. The 'Schedule' section includes 'Start Location*' (set to 'Cervantes'), 'Landing*' (set to 'Cervantes'), 'Est. Arrival*' (set to '27 Jun 2025' and '14:07'), and 'Recording' which has 'Pots Onboard' (set to 'Enter pots onboard') and 'Measure by*' (with options for 'Metres' and 'Fathoms'). At the bottom of the form is a large red button labeled 'Save and start trip'. The bottom of the screen features a navigation bar with five icons: 'Trip Home', 'Pre Trip' (which is highlighted), 'At Sea', 'Pre Land', and 'End Trip'.

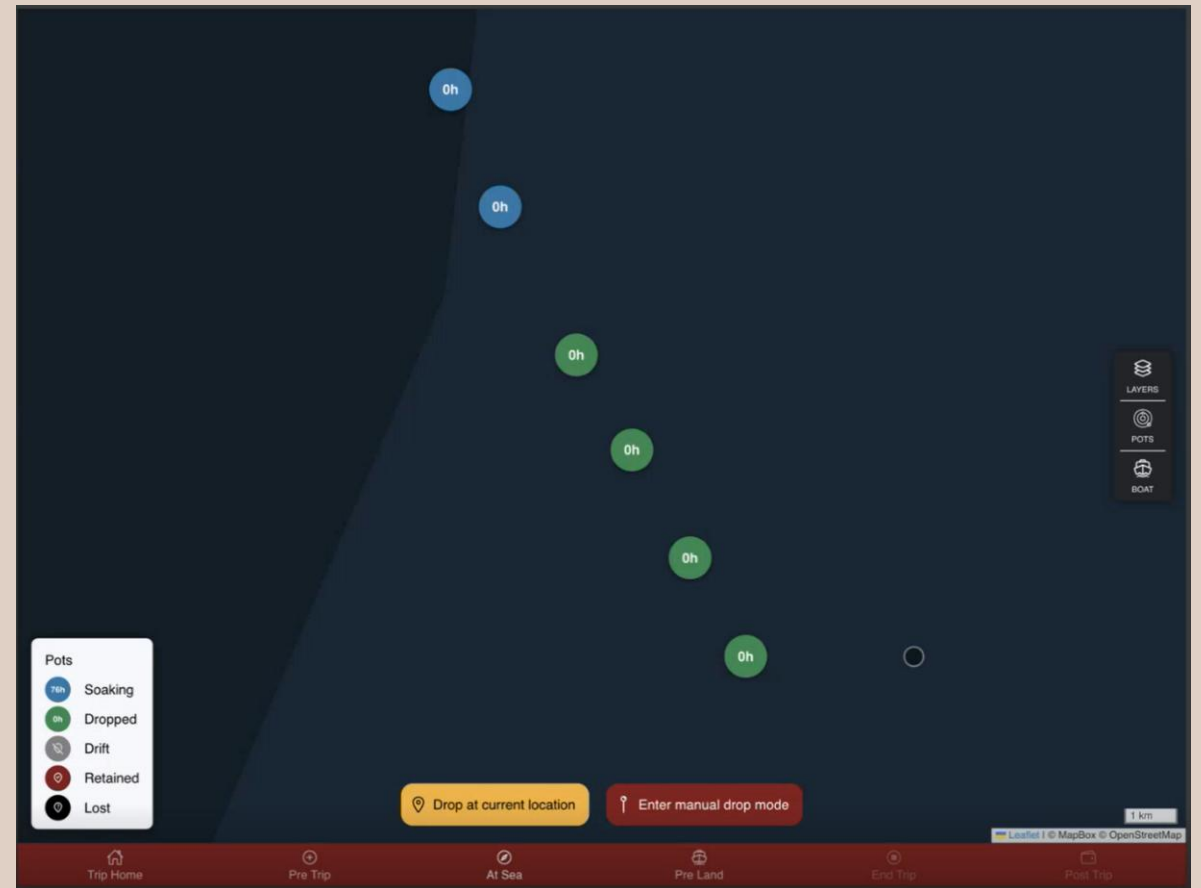
Save and Start your Trip!



Manual Drop Mode

- What is this?
 - If you are feeling unwell, or you want your Master to do it:
 - You can drop pots from your living room – which means you can identify pot drops and sail out later to drop them where you marked the map.
- TIP:

When you pull your pots, just mark them as “Pulled No Drift” otherwise it will show the drift from your home to the sea 😊



At Sea – Pot Drops

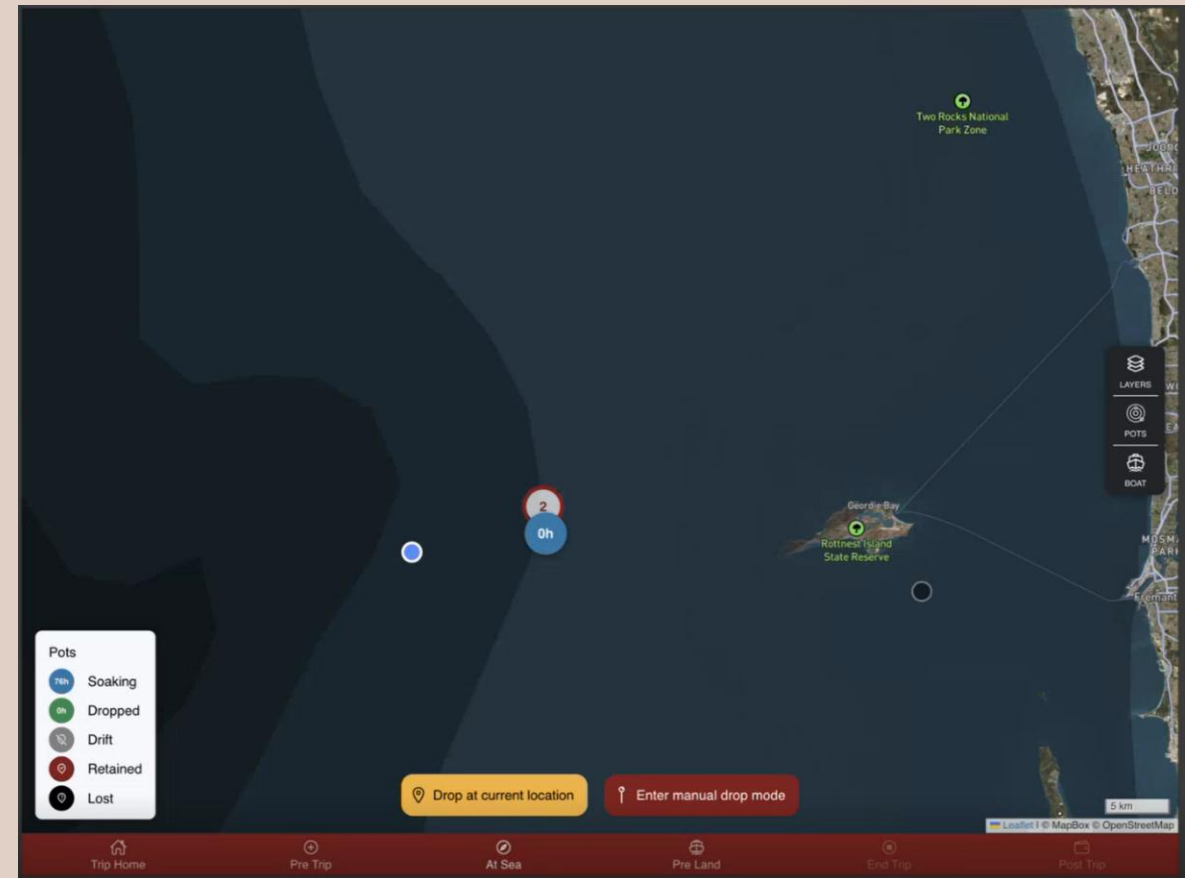


Sailing out - Get Ready to Drop and Pull your Pots

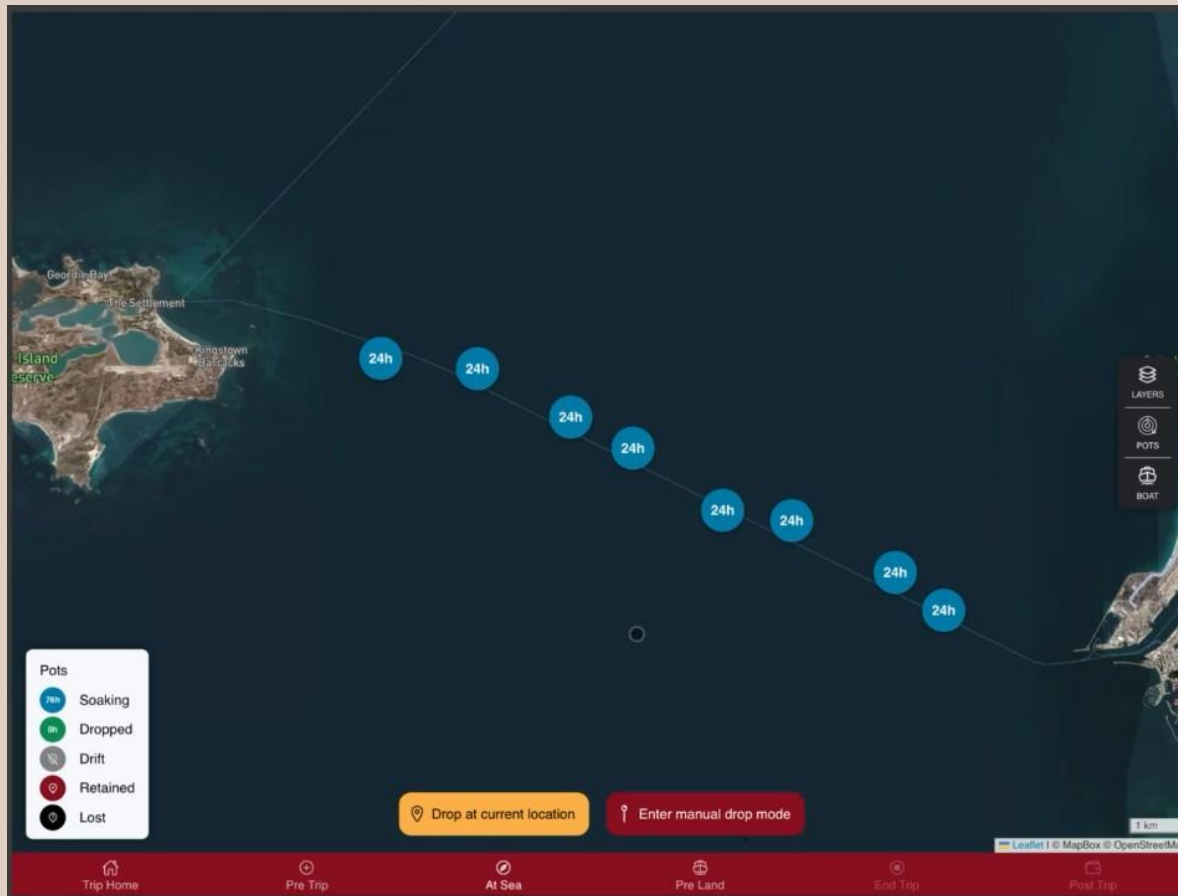
NOTE:

You will not see your pots from your last trip before you started using FishOps

- You can drop pots at your favourite fishing spots
 - Click on “**Drop at Current Location**”
 - A Blue Circle with 0h (0 hours) will be shown on the map
 - The same will happen with each pot dropped
 - You can mention if it’s a single pot or more than 1 (set)
- Now you can sail to your soaking pots and pull them



At Sea – Pot Pulls



- You will be able to pull the pots that you dropped previously, but you will not be able to capture your Catch and Effort in FishOps.
- You will need to use your previous tool to record your catch.

At Sea – Pot Pulls 2nd Trip with FishOps

- To Capture your Catch information, Click on a Soaking Pot
- The Pulled Pot Window will appear
 - Capture your catch quantity with the + or – sign, or your F-keys
 - Add a Pot ID to track your Pots performance
 - If you have a set, put in the no. of pots in the set.
- Any Discards?
 - Click on “**Add Species**”
 - Capture the animal/s and the count
 - Retaining the Pot?
 - Click on “Retain no Drift” if no Drift
 - Click on “Retain” if the pot drifted

The screenshot shows the 'Pulled pot' window in the FishOps application. It is divided into two main sections: 'Retained Catch' and 'Pot characteristics'. The 'Retained Catch' section has input fields for Lobster, Octopus, Setose, Legal, Berried, Under size, and Dead, each with a numeric value (0) and minus/plus buttons. The 'Pot characteristics' section includes fields for Pot ID, Depth (ftm), and No of Pots* (set to 1). Below these is a 'Discarded Species' section with an 'ADD SPECIES' button. At the bottom of the window are two large buttons: 'Retain' and 'Retain no drift'. The background shows a map interface with a 'Pots' sidebar on the left and a bottom navigation bar with icons for Trip Home, Pre Trip, At Sea, Pre Land, End Trip, and Post Trip.

Do this for Each Pot you pull to account for your catch

Lost Pots

- Lost a Pot?
 - Click on the Soaking Pot
 - Click on Lost
 - Select Lost Detail i.e. entire rig, 1 pot, buoy and rope
 - Select a Reason
 - Capture estimated cost of the loss
 - Capture the Pot ID
 - Capture the No of Pots in the Set
 - Repeat the steps for each Pot/ Set lost
- The Estimated Cost will go into your Trip Economics page

Lost

Lost or logged wrong? Mark it here so your records stay clean and your data stays useful.

Lost Pot Detail

Lost detail: Entire Rig

Likely lost reason: Marine Mammal

Estimated cost: 80

Pot ID:

No of Pots*: 1


Cancel Mark pot as lost

Drop at current location Enter manual drop mode

Pre Trip At Sea Pre Land End Trip

Pre Land 1/2

- When you have Pulled all your pots, Click on “**Pre Land**”
- Check:
 - Vessel Configuration
 - Schedule
 - Sales Plan
 - Back of Boat Sales?
 - Mark it “**Yes**” - **Green**
 - Add the quantity ordered
 - No? leave it as it is



Pre Land

Review key trip details before entering port, like your boat or catch info and pot status. So everything's ready when you land.

Data from your trip

Vessel configuration	
Boat	Little boat
MFL	TIMFL001
Master	Ti Zhou
Crew	
Crew 1	Jason Dao
Schedule	
Start Location	Cervantes
Landing	Cervantes
Est. Arrival	27/06/2025 2:07PM
Sales plan	
Back of boat*	<input checked="" type="checkbox"/> Yes <input type="checkbox"/> No

Catch Information	
POT CATCH SUMMARY	
Retained Catch	
Lobster	11
Octopus	11
Discarded Catch	
Setose	1
Legal	1
Berried	0
Under size	1
Dead	0
Other Discards	
wobby	3

Interaction with protected species [+ ADD SPECIES](#)

[Trip Home](#) [Pre Trip](#) [At Sea](#) [Pre Land](#) [End Trip](#) [Post Trip](#)

Pre Land 2/2



- Catch Information:
 - Are the numbers correct?
 - No, click on “**Pot Catch Summary**”
 - Now you can see each pot and the values captured
 - Something off?
 - Click on the box that is wrong and change it,
 - Click on “**Update**”
 - Your Catch information is now 100%
- Any Protected Species interactions?
 - No, Don't capture anything
 - Yes, Click on “**Add Species**”
 - Select the animal from the list, add a count

Pre Land

Review key trip details before entering port, like your boat or catch info and pot status. So everything's ready when you land.

Pot Catch Summary

Pot	Lobster	Octopus	Setose	Legal	Berried	Under size	Dead
1	10	10	1	1	0	1	0
2	1	1	0	0	0	0	0

Cancel Update

You're Ready to Land

End Trip



End Trip

You're nearly there. Just confirm who's receiving your catch and the total weight landed. If you want to break down sales and costs later, you can do that anytime in Reporting.

Delivering your catch

Total weight of lobsters caught (kg)*	<input type="text" value="Enter total weight"/>
Receiver	<input type="text" value="Geraldton Fishermens Cooperative Limited"/>
Receiver number	TEST-RR-NUM-2
Weigh-in receipt number	<input type="text" value="Enter receipt number"/>
Landing Date/Time*	<input type="text" value="27 Jun 2025"/> <input type="text" value="14:22"/>
End Port*	<input type="text" value="Cervantes"/>

Trip Home Pre Trip At Sea Pre Land End Trip Post Trip

- Did you submit your DPIRD information to CatchER/ FishEYE?
- Now you can End your Trip
- Click on “**End Trip**”
 - Capture the Total Weight of your Catch
 - Confirm the Receiver Name
 - Capture your Weigh-In Receipt Number
 - Make sure the Landing Date/ Time is right
 - Make sure the End Port is right
 - Click on “**End Trip**”

Post Trip

- Now you're home, freshened up and ready
- What did this trip cost....
 - Capture:
 - Your Fuel Cost
 - Amount of Fuel Used
 - Cost of the Bait
 - How much Bait was used
 - Crew Wages
 - Lost/ Damaged Gear Cost
 - Other Costs
- What did you make:
 - Sales to Receiver – how much?
 - Back of Boat (BoB) Sales – how much?
- Your Total Trip Revenue = Sales to Receiver + BoB
- Estimated Profit= Revenue – Total Trip Costs

Post Trip

You're nearly there. Just confirm who's receiving your catch and the total weight landed. If you want to break down sales and costs later, you can do that anytime in Reporting.

Economic data

Cost for this Trip		Revenue	
Total fuel cost*	<input type="text" value="\$0.00"/>	Sales to receiver*	<input type="text" value="\$0.00"/>
Litres fuel used*	<input type="text" value="0"/>	Back of boat sales*	<input type="text" value="\$0.00"/>
Total bait cost*	<input type="text" value="\$0.00"/>	Total trip revenue	\$0
Kilos bait used*	<input type="text" value="0"/>	Estimated profit	\$0
Crew wages*	<input type="text" value="\$0.00"/>		
Food & drink*	<input type="text" value="\$0.00"/>		
Lost/damaged gear*	<input type="text" value="\$0.00"/>		
Other costs*	<input type="text" value="\$0.00"/>		
Total trip costs	\$0		

Trip Home

Pre Trip

At Sea

Pre Land

End Trip

Post Trip

Help



- Frequently Asked Questions/FAQs
 - Questions with short Answers
- Contact Us
 - Contact Details for WRL
- Videos
 - Online videos to help you use FishOps
 - Small, bite-size videos for each Feature and its functions

What to expect from us



- Support throughout the Life span of FishOps
- Bug/ Issue Resolution
- Continuous Improvement through Change Request Process
- Managed App Releases
- Health Checks to ensure the App and Member's Portal are on the latest infrastructure



Next Steps

- Go out with you on your first Trip with the App
- Support your first real-time experience
- Record your experience with App:
 - What went well
 - What didn't go so well
 - What did we do to make it work?
- Understand how it works in your business
- Review the Workflow in the App with you
- Support You and WRL

Thank you for your time

